

L A K E C O U N T Y T H O M P S O N T P.

PARKER TRACT BOND TRACT

- #3 254-145 O.L. Luther 1A Lot 9 & 14
- #11 278-318 F. RADAKER " 10
- #12 292-442 J. & M. Frey " 2
- #13 257-339 G. & E. Grant " 5
- #14 263-60 R. & V. Wilmot " 2
- #10 304-421 B. Thomsen " 9 & 14
- #15 303-1 H. & R. FERNANDEZ " 10
- #2 291-373 S. & M. CLEMSON " 9 & 14
- #16 303-606 R. SCHNEIDER " 2



P. 166

T

T R.

E

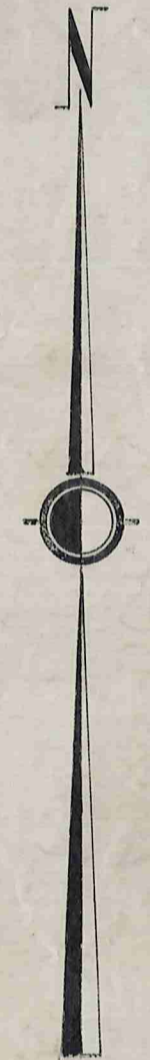
L

L

V

T

M



SCALE 1IN.=10CH.

FEB 2, 1935  
JAN 1, 1941  
JAN. 1, 1957

U.S. 6

U.S. 6

7 N.E.

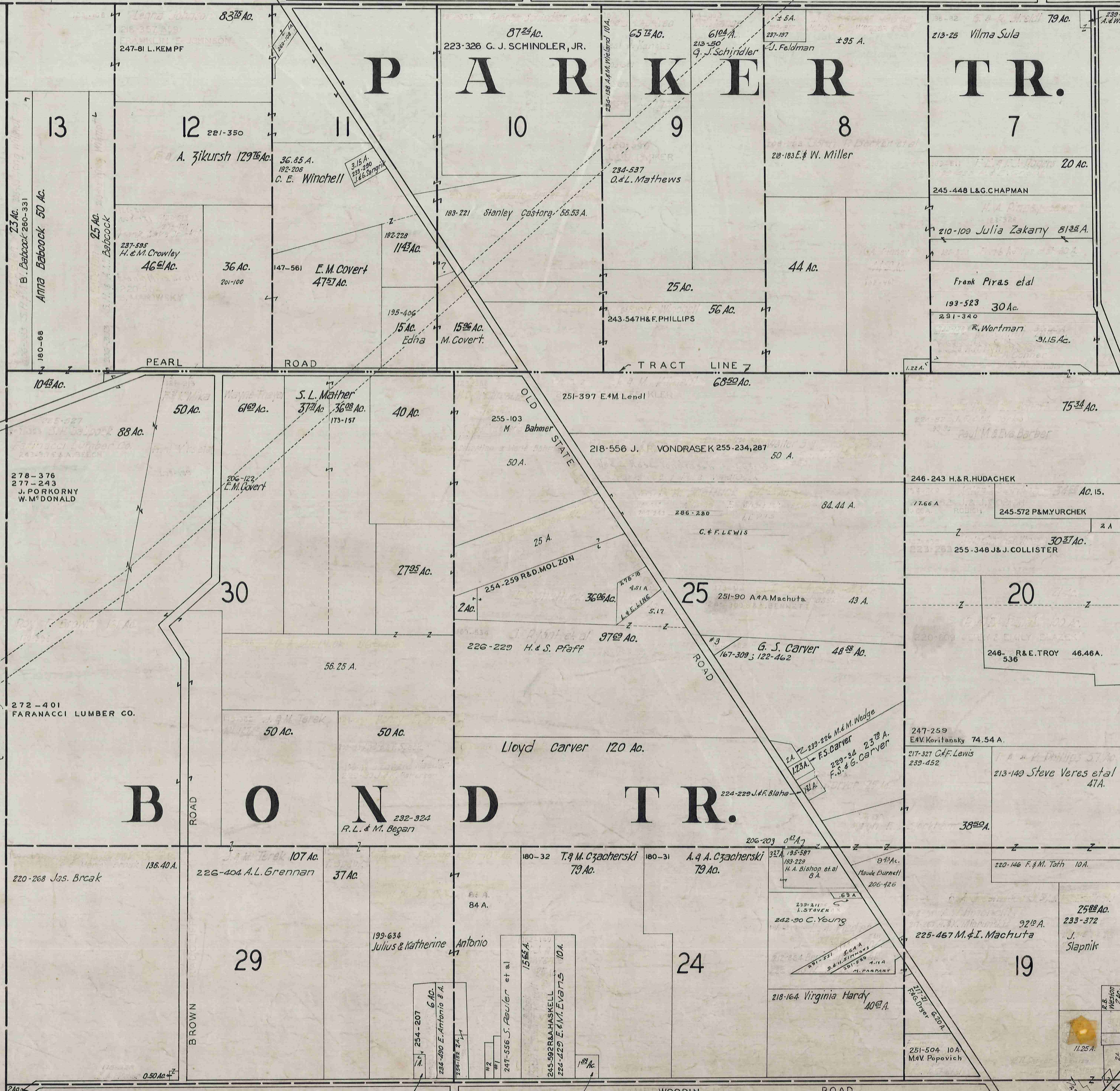
NORTH-WEST  
QUARTER

H A M B D E N T P.

NORTH-WEST  
QUARTER

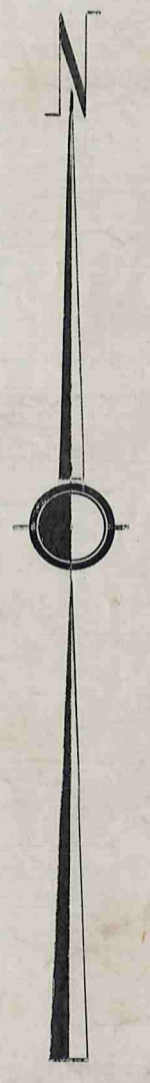
L A K E R A D C L I F F E R O A D C O U N T Y

C H A R D O N T R A P.



O.L. 24 #1 R.4 E. Calimer 1 A. 254-13  
 " 24 #2 N. Glavosek 1 A. 254-153  
 " 25 #3 D. A. Wedge 2.12 A. 254-270

PARKER TRACT  
 BOND TRACT



SCALE 1 IN. = 10 CH.

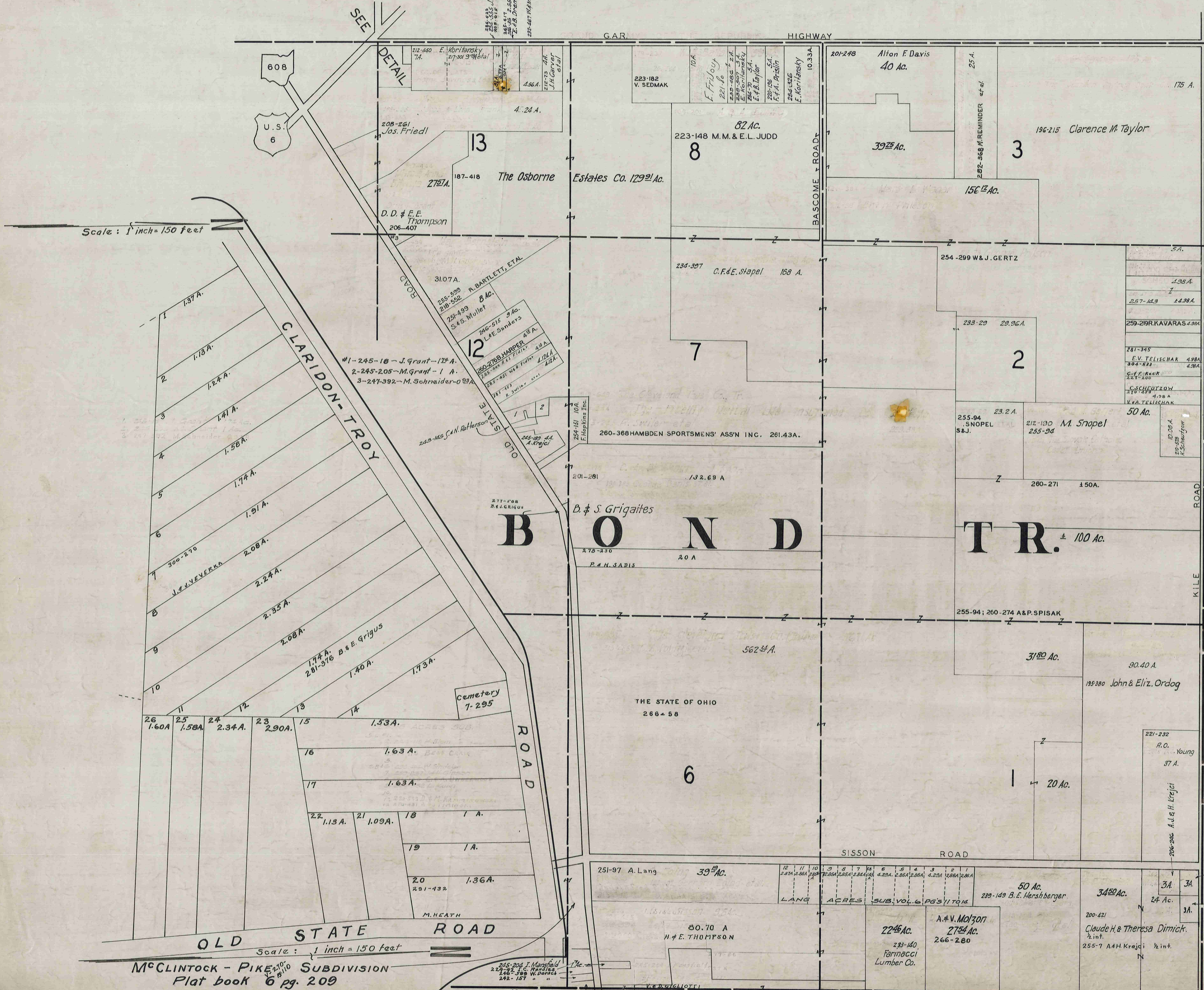
JAN. 1, 1957

7 N.W.

SOUTH-EAST QUARTER

# HAMB DEN T P.

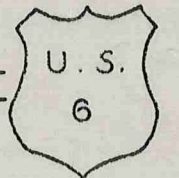
SOUTH-EAST QUARTER



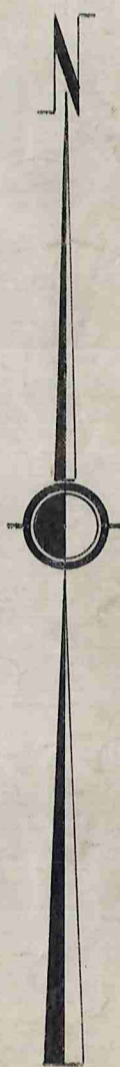
Scale: 1 inch = 150 feet

Scale: 1 inch = 150 feet

McCLINTOCK - PIKE SUBDIVISION  
Plat book 6 pg. 209



HAMB DEN T P.



SCALE 1 IN. = 10 CH.

JAN. 1, 1957

- LANG ACRES SUB. S.L.# Vol. 6 pgs. 11-14
- 1 292-572 - L.M. LESLIE
  - 2 260-115 - H. Blom
  - 3
  - 4 277-116 - Bess Craig
  - 5 300-318 J. & M. HARRIS
  - 6 266-259-404 - W. Sindelar
  - 7 304-593 W. Sindelar
  - 8 272-120 - C. & A. Underwood
  - 9 260-382 - L. Kulin
  - 10
  - 11 270-539 - D. & M. Kamminowski
  - 12 270-431 - A. & J. Timinski

- 257-517 R. Hurtoon
- 282-61 J. & E. Liplin

7 S.E.

HUNTSBURG T P.

SOUTH-WEST QUARTER

HAMB DEN T P.

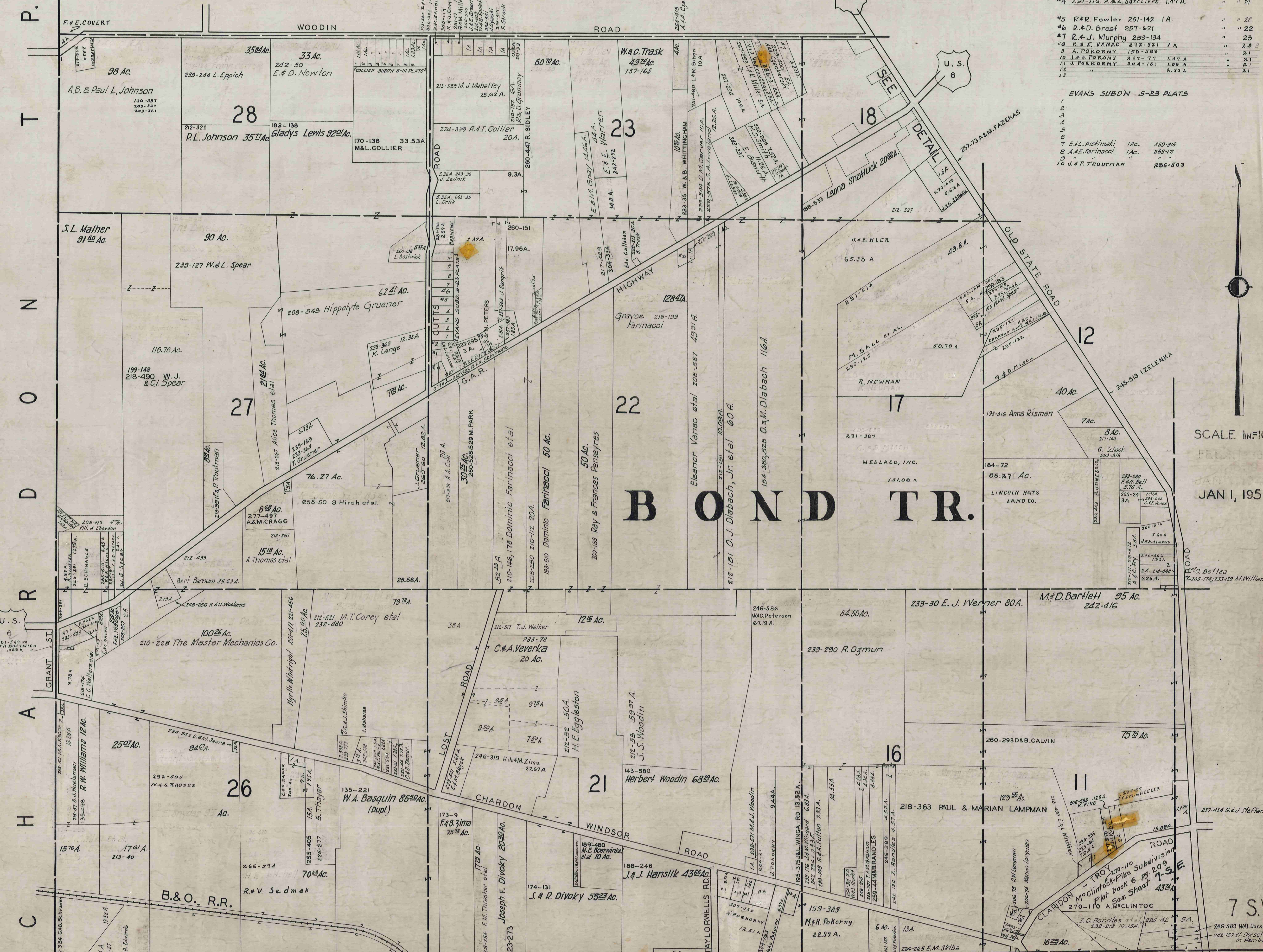
SOUTH-WEST QUARTER

O. L. No. 22

#2	A. E. McClish	251-204, 293	0.17 A.	"	"	22
#3		251-350	0.80 A.	"	"	22
#4		291-118	A. & E. BUTCLIFFE	1.47 A.	"	21
#5	R. & R. Fowler	251-142	1 A.	"	"	22
#6	R. & D. Brest	257-621	"	"	"	22
#7	R. & J. Murphy	259-194	"	"	"	23
#8	R. & E. VANAC	292-321	1 A.	"	"	2.8
#9	A. POKORNY	159-389	"	"	"	2.1
#10	J. & S. POKORNY	241-77	1.47 A.	"	"	2.1
#11	J. & S. POKORNY	304-161	1.08 A.	"	"	2.1
#12			2.93 A.	"	"	2.1

EVANS SUB'DN 5-23 PLATS

1						
2						
3						
4						
5						
6						
7	E. L. Ashimaki	1 Ac.	259-316			
8	A. E. Brinacci	1 Ac.	263-177			
9	J. P. Troutman		286-503			



SCALE 1"=100'

JAN 1, 1957

7 S.W.

MUNSON TP.

C L A R

D I O N

T P.